



**Office of the Monroe County Surveyor**  
**Trohn Enright-Randolph**

---

Health Services Building  
119 West 7<sup>th</sup> Street  
Bloomington, IN 47404  
Phone: (812) 349-2570

Dear User,

The following images were obtained in 2017 by the Office of the Monroe County Surveyor from the State Imaging and Microfilm Laboratory at the Indiana State Archives. The field notes and plats for Monroe County are stored on microfilm Reel 4658 at the Indiana State Archives. Each page provided by the State Imaging and Microfilm Laboratory is approximately 18MB. Our office combined the pages by Township & Range and reduced the resulting pdfs. This process may have caused some degradation in quality. We will provide unreduced images of specific pages if required. Please contact us at 812-349-2570 or at [SurveyorsOffice@co.monroe.in.us](mailto:SurveyorsOffice@co.monroe.in.us) to request a higher quality image of any specific page.

The pdfs are bookmarked with the original page numbers as assigned by the State Imaging and Microfilm Laboratory.

Be prepared to provide the county name, reel number, and the required page numbers when requesting full sized images.

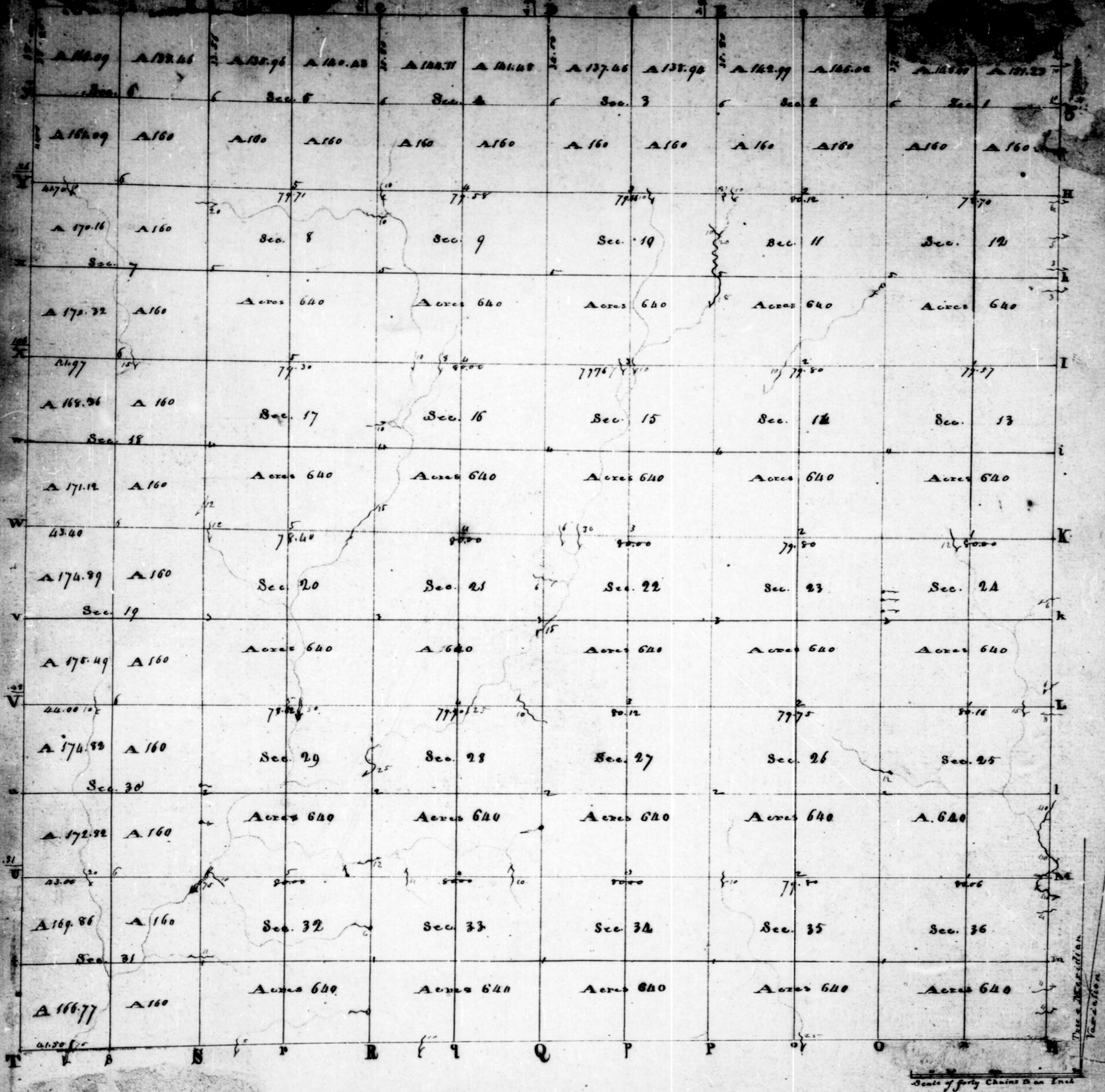
If you would like a DVD of an entire county, please provide us with one DVD per county along with a self-addressed, stamped envelope.

Trohn Enright-Randolph  
Monroe County Surveyor

**T 8 N**

**R 1 W**





Township N. VII, Range N. I, West of 2<sup>nd</sup> Meridian. Surveyed by Arthur Harris. 1815.

Description of the Soil on the interior Sectional lines.

Description of the Soil in the		Between Sections		Between Sections	
Between Sections	Locality &c	Between Sections		Between Sections	
35.36	Wet thin Soil - Timber Oak & Hickory	33.34	Land Rich Rolling - Timber Walnut, Sugar Birch, Oak & Hickory	31.32	Land Rich Rolling - Timber Walnut, Sugar Birch, Oak & Hickory
35.36	ditto	27.34	ditto	29.32	ditto
35.26	ditto	27.28	ditto	29.30	ditto
24.25	ditto	22.27	ditto	20.20	ditto
23.24	Land Rolling rich Soil - Timber Birch, Sugar Oak & Ash	21.22	ditto	19.26	ditto
13.24	ditto	15.22	ditto	17.20	ditto
12.10	ditto	15.16	ditto	17.18	ditto
12.13	ditto	10.15	ditto	8.17	ditto
11.12	ditto	9.10	ditto	7.8	ditto
1.12	ditto	3.10	ditto	5.8	ditto
1.8	ditto	3.4	ditto	3.6	ditto
24.35	ditto	32.33	ditto	6.7	ditto
24.35	ditto	28.33	ditto	7.18	ditto
25.37	ditto	25.29	ditto	18.19	ditto
23.16	ditto	21.28	ditto	19.30	ditto
22.23	ditto	20.21	ditto	20.24	ditto
19.23	ditto	16.24	ditto		
18.15	ditto	16.17	ditto		
18.16	ditto	9.16	ditto		
18.16	ditto	8.9	ditto		



T. N. of N. R. No 1 W 2nd Mer. Ind. a.

I certify that the foregoing Transcript of the  
field notes of T. N. of N. R. No 1 W. 2nd Mer. in  
Ind. has been compared with the original  
notes in this Office & found to be correct.  
Surveyor General's Office  
Cincinnati, Oct 17/1841 S.

Sur General,

Township N. 8. South of Range N. 1 West of the 2nd Mer. Indiana

South Boundary. April 2<sup>d</sup> 1841.

West. On the South Boundary of Sec. 36 T. 8. N. R. 1 W.  
From the cor of T. 8. N. R. 1 E. 1 W.

40.00 Set a 7/8 supst from which,  
W Oak 10 in diam. 83.3 N 30 W 100 dist, to,  
Lg 18 4 " " N 83 E 19 1 "

112.00 To a Brook. 8 mts. m. s., course S. E.

80.00 Set a post from the cor of sec. 35 & 36. From which,  
Nick 3 in diam. 100 E. 3 W 100 dist, to,  
W Oak 20 4 " " N 30 W 18 4 "  
Poor Hilky Oak Land.

West. On the South Boundary of Sec. 35 T. 8. N. R. 1 W.

39.00 To a Brook. 25 mts. m. s., course S.

40.00 Set a 7/8 supst from which,  
Butt 10 in diam. 150 N 10 W 100 dist, to,  
W. Birch 3 4 " " S 7 E 14 4 "

80.00 Set a post from the cor of sec. 34 & 35. From which,  
Birch 5 in diam. 150 N 11 W 100 dist, to,  
Nick 11 4 " " N 6 E 21 4 "  
Middleling good land. Timber Birch.

West. On the South Boundary of Sec. 34 T. 8. N. R. 1 W.

13.50 To a Brook. 8 mts. m. s., course N. E.

40.00 Set a 7/8 supst from which,  
Sugar. 14 in diam. 131 E 10 W 100 dist, to,  
Birch 4 4 " " S 45 W 25 4 "

80.00 Set a post from the cor of sec. 33 & 34. From which,  
Sugar. 18 in diam. 135 N 27 W 100 dist, to,  
Birch 10 4 " " S 8 E 5 4 "  
Land same as last note.

West. On the South Boundary of Sec. 33 T. 8. N. R. 1 W.



40.00 Set a <sup>1/4</sup> suppost from which,  
Hick 8 in dia: trees. N 42 W 12 links dist, to,  
Beck 9 " " S 44 E 26 " "  
37.50 To a Brook 10 links wide, corner S.  
80.00 Set a post for the cor of sec. 32 & 33 from which,  
Beck 14 in dia: trees. N 80 E 4 links dist, to,  
Sugar 10 " " S 25 W 20 " "  
Lands prod Timber Beck, Walnut Hick

West On the South Boundary of sec 32 T. 8. N. R. 1 W.  
40.00 Set a <sup>1/4</sup> suppost from which,  
Hick 13 in dia: trees. N 54 E 6 links dist, to,  
Dogwood 4 " " S 27 W 22 " "  
66.50 To a Brook 8 links wide, corner S.  
80.00 Set a post for the corner of 31 & 32 from which,  
Beck 4 in dia: trees. S 70 E 12 links dist, to,  
Do. 4 " " West 13 " "  
Pine Beck, lands

West On the South Boundary of sec 31 T. 8. N. R. 1 W.  
40.00 Set a <sup>1/4</sup> suppost from which,  
Sugar 6 in dia: trees. N 52 E 3 links dist, to,  
Do. 4 " " S 65 W 16 " "  
56.50 To a creek 7 1/2 links wide, corner S. E.  
80.00 Set a <sup>1/4</sup> suppost for the cor of T. 7. S. R. 1 W. 12 W.  
Lands rich and timber Timber Sugar, Ash, Walnut  
Surveyed by  
James Holmes  
Dep. J. Sur.

East Boundary  
North On the East Boundary of sec. 36 T. 8. N. R. 1 W.  
on the 2<sup>nd</sup> Principal Meridian

15.00 To a Brook 4 links wide, corner S.  
25.00 " " Do. 4 " " " E.  
40.00 Set a <sup>1/4</sup> suppost from which,  
Beck 24 in dia: trees. N 38 E 12 links dist, to,  
Dogwood 9 " " S 38 W 22 " "  
65.00 To a Brook 4 links wide, corner E.  
70.00 To " Do. 40 " " " S. E.  
80.00 Set a post for the corner of 25 & 26 from which,  
Sugar 12 in dia: trees. S 78 W 25 links dist, to,  
Dogwood 36 " " S 87 E 25 " "  
Hilly Oak lands.

North On the East Boundary of sec. 25 T. 8. N. R. 1 W.  
1.00 To a Brook 40 links wide, corner S. W.  
15.00 " " Do. — " " " E. E.  
35.00 " " Do. — " " " S. W.  
40.00 Set a <sup>1/4</sup> suppost in a Brook from which,  
Sugar 16 in dia: trees. East 15 links dist: Left  
Brook to the West  
75.00 To a Brook 6 links wide, corner W.  
80.00 Set a post for the corner of 24 & 25 from which,  
Sugar 10 in dia: trees. N 50 E 16 links dist, to,  
Dogwood 4 " " S 46 W 23 " "  
Lands bottom, Timber Beck, Sugar & Elm.

North On the East Boundary of sec. 24 T. 8. N. R. 1 W.  
15.00 To a Brook 6 links wide, corner S. W.  
40.00 Set a <sup>1/4</sup> suppost from which,  
Oak 24 in dia: trees. S 82 W 6 links dist, to,  
Maple 8 " " S 78 E 5 " "  
50.00 To a Brook 6 links wide, corner S. W.  
50.30 " " Sugar 16 " "  
55.00 To a Brook — links wide, corner S. E.



40.00 Set a post from which,  
Nicky 8 in dist. bears N 12 W 12 links dist. to,  
Beck 9 " " S 44 E 26 " "  
57.50 To a Brook 10 links wide, corner S.  
80.00 Set a post for the cor of sec. 32 & 33. From which,  
Beck 14 in dist. bears N 80 E 7 links dist. to,  
Sugar 10 " " S 45 W 20 " "  
Sunde post Timber Beck, Walnut Nicky

West On the South Boundary of sec. 32 T. 8 N. R. 1 W.  
40.00 Set a post from which,  
Nicky 13 in dist. bears N 54 E 6 links dist. to,  
Hogwood 4 " " S 27 W 22 " "  
66.50 To a Brook 8 links wide, corner S.  
80.00 Set a post for the corner of 31 & 32 from which,  
Beck 4 in dist. bears S 70 E 12 links dist. to,  
Do. 4 " " West 13 " "  
Pine Beck, lands

West On the South Boundary of sec. 31 T. 8 N. R. 1 W.  
40.00 Set a post from which,  
Sugar 6 in dist. bears N 53 E 3 links dist. to,  
Do. 4 " " S 65 W 16 " "  
56.50 To a creek 75 links wide, corner S. E.  
80.00 Set a temporary post for the cor of T. 7 & 8 N. R. 1 & 2 W.  
Sunde rich and low Timber Sugar, Ash, Walnut  
Surveyed by  
James Holmes  
Dep. J. Sur.

East Boundary  
North On the East Boundary of sec. 36 T. 8 N. R. 1 W.  
on the 2<sup>nd</sup> Principal Meridian

15.00 To a Brook 4 links wide, corner E.  
25.00 " Do. 4 " " " E.  
40.00 Set a post from which,  
Beck 24 in dist. bears N 38 E 10 links dist. to,  
Hogwood 9 " " S 38 W 25 " "  
65.00 To a Brook 4 links wide, corner E.  
70.00 To " Do. 40 " " " S. E.  
80.00 Set a post for the corner of 25 & 36 from which,  
Sugar 12 in dist. bears S 78 W 25 links dist. to,  
Hogwood 36 " " S 87 E 25 " "  
Hilly Oak lands.

North On the East Boundary of sec. 25 T. 8 N. R. 1 W.  
1.00 To a Brook 40 links wide, corner S. W.  
15.00 " " Do. — " " " S. E.  
35.00 " " Do. — " " " S. W.  
40.00 Set a post in a Brook from which,  
Sugar 16 in dist. bears East 15 links dist. Left  
Brook to the West  
75.00 To a Brook 6 links wide, corner W.  
80.00 Set a post for the corner of 24 & 25 from which,  
Sugar 10 in dist. bears N 50 E 16 links dist. to,  
Hogwood 4 " " S 76 W 23 " "  
Sunde bottom, Timber Beck, Sugar & Elm.

North On the East Boundary of sec. 24 T. 8 N. R. 1 W.  
15.00 To a Brook 6 links wide, corner S. W.  
40.00 Set a post from which,  
Oak 24 in dist. bears S 82 W 6 links dist. to,  
Maple 8 " " S 78 E 5 " "  
50.00 To a Brook 6 links wide, corner S. W.  
50.30 " " Sugar 16 " "  
55.00 To a Brook — links wide, corner S. E.



80.00 Kept up the Brook. At the cr. then left it to the West  
 Set apart for the cargo 134<sup>th</sup> from white,  
 Buck 18 in dist. from. A53 E 16 mds. dist. to,  
 10. 18. " " " " A58 N 33. " "  
 Hilly Buck, land, 1<sup>st</sup> 1/2 mds. near Limbu  
 Sugar, Buck, &c.

North On the East Boundary of sec. 13 T. 8. N. R. 177.  
 40.00 Set apart for the cargo 124<sup>th</sup> from white,  
 Buck 8 in dist. from. A14 N. 9 mds. dist. to,  
 N Oak. 12. " " " " A39 E 23. " "

69.75 To a Sugar. 15 in dist. in the line.  
 Land hold. Limbu Sugar

80.00 Set apart for the cargo 124<sup>th</sup> from white,  
 Buck. 12 in dist. from. A20 E 31 mds. dist. to,  
 Sugar. 211 " " " " A2 E 60 " "

North On the East Boundary of sec. 12. T. 8. N. R. 177.  
 15.00 To a Poplar 30 in dist. in the line.  
 35.50 To a Brook 3 mds. near, corner E.  
 40.00 Set apart for the cargo 110<sup>th</sup> from white,  
 N Oak. 36 in dist. from. A10 E 19 mds. dist. to,  
 Sugar. 6 " " " " A62 E 24 " "

45.00 To a Brook 3 mds. near, corner E.

60.00 " " 20. 5 " " " E.

72.50 " " Sugar. 10 in dist. in the line.

78.00 To a Brook 6 mds. near, corner E.

80.00 Set apart for the cargo 141<sup>st</sup> from white,  
 Sugar 8 in dist. from. A3 E 6 mds. dist. to,  
 Buck 12 " " " " A16 N 26 " "

Land near Limbu Sugar, Buck, Oak,

North On the East Boundary of sec. 1. T. 8. N. R. 177.

26.40 To a Sugar. 15 in dist. in the line.  
 40.00 Set apart for the cargo 134<sup>th</sup> from white,  
 Sugar 8 in dist. from. A64 N. 23 mds. dist. to,  
 Buck 15 " " " " A64 E 34 " "

40.70 To a Brook 10 mds. near, corner E.

60.00 " " 20. 10 " " " E.

80.00 Set apart for the cargo 138<sup>th</sup> from white,  
 Land hold Limbu Sugar tree &c.

Surveyed by  
 Alexander Holmes.  
 Deputy Sur.

### North Boundary.

B. 132.

East On a Random line On the South Boundary of T. 9. N. R. 177.  
 Six mds. Tell 14 chs North of S. corner.  
 Corrected and marked the line West.

West On the South Boundary of sec. 36. T. 9. N. R. 177.

27.00 To a Brook 10 mds. near, corner N. E.

40.00 Set apart for the cargo 158<sup>th</sup> from white,  
 N Oak 30 in dist. from. A58 N 28 mds. dist. to,  
 Buck 12 " " " " A80 E 19 " "

80.00 Set apart for the cargo 35<sup>th</sup> from white,  
 Buck 18 in dist. from. A70 N. 24 mds. dist. to,  
 Hick 10 " " " " A50 E 7 " "  
 Land Buck, land.

West On the South Boundary of sec. 35 T. 9. N. R. 177.

40.00 Set apart for the cargo 169<sup>th</sup> from white,  
 Sugar 11 in dist. from. A69 E. 13 mds. dist. to,  
 20. 11 " " " " A50 N. 21 " "

77.50 To a Brook 8 mds. near, corner N.

80.00 Set apart for the cargo 34<sup>th</sup> from white,  
 Buck 12 in dist. from. A38 N. 31 mds. dist. to,



Beck 11 in dir. line. N 8 E. 17 mts dist.  
Sands and timber same.

West On the South Boundary of sec. 34. T. 9 N. R. 1 W.  
40.00 Set a post from whike,  
Sugar 14 in dir. line. N 66 W. 21 mts dist. to,  
Loc. 5 " " " " N 40 E. 22 " "  
71.00 To a Brook 12 mts mid. course N W  
80.00 Set a post further across 33 & 34 from whike,  
Beck 5 in dir. line. N 39 W. 25 mts dist. to,  
Loc. 11 " " " " N 48 E. 35 " "  
Sands rich and. herb. Timber Sugar Ash. Buckh.

West On the South Boundary of sec. 33. T. 9 N. R. 1 W.  
40.00 Set a post from whike,  
Sugar 14 in dir. line. N 69 E. 10 mts dist. to,  
Loc. 10 " " " " N 55 W. 116 " "  
54.00 To a Brook. 50 mts mid. course S. E.  
73.50 " " Loc. 25 " " " " S. E.  
80.00 Set a post further across 32 & 33 from whike,  
Beck 20 in dir. line. N 22 E. 12 mts dist. to,  
Beck 36 " " " " N 37 W. 36 " "  
Sands R. rate same. last R. rate same. Timber  
Sugar Ash Walnut. &c.

West On the South Boundary of sec. 32. T. 9 N. R. 1 W.  
40.00 Set a post from whike,  
Sugar 5 in dir. line. N 60 E. 10 mts dist. to,  
Ash 14 " " " " N 84 W. 18 " "  
33.50 To a Brook 20 mts mid. course S. E.  
80.00 Set a post further across 31 & 32 from whike,  
Beck 11 in dir. line. N 72 W. 20 mts dist. to,  
Beck 4 " " " " N 60 E. 19 " "

Sand R. rate. Timber Sugar Ash & Walnut.

West On the South Boundary of sec. 31. T. 9 N. R. 1 W.  
40.00 Set a post from whike,  
Oak 16 in dir. line. N 70 E. 17 mts dist. to,  
Logwood 3 " " " " N 64 W. 15 " "  
80.00 Moved the Timber post 200 into South. to E. of T.  
8 & 9. N. R. 1 & 2 W. from whike,  
Beck 13 in dir. line. N 26 E. 18 mts dist. to,  
Oak 16 " " " " N 66 W. 32 " "  
Good Oak Land herb and rich.

## West Boundary.

B 130

North On the East Boundary of sec. 36. T. 8 N. R. 2 W.  
15.00 To a Brook. 50 mts mid. course S. E.  
40.00 Set a post from whike,  
Beck 13 in dir. line. N 60 E. 17 mts dist. to,  
Loc. 15 " " " " N 40 W. 15 " "  
55.50 To an Ash. 16 in dir. in the line.  
80.00 Set a post further across 25 & 36 from whike,  
Logwood 14 in dir. line. N 60 E. 10 mts dist. to,  
Beck. 18 " " " " N 15 W. 27 " "  
Sands R. rate in R. rate same. 2<sup>nd</sup> R. rate. Rich &  
herb. Timber Sugar & Walnut. Ash. &c.

North On the East Boundary of sec. 25. T. 8 N. R. 2 W.  
16.50 To a Brook 8 mts end. course S. E.  
28.00 To a Brook. 40 in dir. stands with line.  
40.00 Set a post from whike,  
Sugar 13 in dir. line. N 74 E. 20 mts dist. to,  
Beck 8 " " " " N 65 W. 26 " "  
44.00 To a Brook 60 mts mid. course S. E.  
80.00 Set a post further across 24 & 25 from whike,



Sugar 13 in dia: here. N 55 E 11 links dist: to,  
 Do. 14 " " N 57 W 24 " "  
 Sand & timber same as last, mile.

North On the East Boundary of sec. 24 T 8. N. R. 2 W.  
 18.00 To a W Oak 30 in dia: in the river.  
 40.00 Set a 7/8 support from which,  
 Sugar 16 in dia: here. S 78 W 14 links dist: to,  
 Buck 3 " " N 10 E 13 " "  
 80.00 Set a post for the corner Sec. 13 & 24 from which,  
 Sugar 13 in dia: here. S 66 E 14 links dist: to,  
 Do 6 " " N 66 W 24 " "  
 Land of middling quality Timber Buck, Sugar,  
 Poplar, &c. &c.

North On the East Boundary of sec. 13. T 8. N. R. 2 W.  
 40.00 Set a 7/8 support from which,  
 W Oak 16 in dia: here. S 57 W 37 links dist: to,  
 Dogwood 6 " " N 47 E 13 " "  
 69.00 To a Buck 8 links near Leonard Co.  
 78.00 " " Sugar 13 in dia: in the river  
 80.00 Set a post for the corner Sec. 12 & 13. from which,  
 Oak 6 in dia: here. N 30 W 11 links dist: to,  
 W Oak 5 " " S 66 E 18 " "  
 Land 1/2 mile same; 2nd 1/2 2nd rate Timber Oak, Poplar, &c.

North On the East Boundary of sec. 12. T 8. N. R. 2 W.  
 23.50 To a Buck 14 in dia: stands in the river.  
 35.00 To a Spring Run. 70 links near Leonard Co.  
 Rattle snake den at the Head  
 40.00 Set a 7/8 support from which,  
 Poplar 16 in dia: here. N 65 E 8 links dist: to,  
 Poplar 36 " " N 54 W 24 " "

80.00 Set a post for the corner Sec. 1 & 12 from which,  
 Dogwood 4 in dia: here. S 60 W 7 links dist: to,  
 R Oak 30 " " N 40 E 5 " "  
 Solid Oak land.

North On the East Boundary of sec. 1. T 8. N. R. 2 W.  
 28.50 To a W Oak 36 in dia: in the river.  
 40.00 Set a 7/8 support from which,  
 W Oak 10 in dia: here. S 56 W 11 links dist: to,  
 Poplar 40 " " N 31 E 7 " "  
 57.50 To an Oak 20 in dia: in the river.  
 81.00 Set a timber post for the corner T 8 & 9 N. R. 1 & 2 W.  
 April 3. 1811 Surveyed by  
 James Holmes D.S.

## Subdivisions

North Return Sec 35 & 36. T 8. N. R. 1 W.  
 40.00 Set a 7/8 support from which,  
 Buck 15 in dia: here. N 30 E 28 links dist: to,  
 Do 15 " " N 30 W 32 " "  
 80.00 Set a post for the corner Sec. 25, 26, 35 & 36. from which,  
 Maple 10 in dia: here. N 66 W 3 links dist: to,  
 Buck 3 " " S 57 W 7 " "  
 Land hilly, thin soil. Timber Oak, Hickory, &c.

East On a Random line between Sec 25 & 36. T 8. N. R. 1 W.  
 40.00 Set a timber 7/8 support.  
 79.00 To a Buck 25 links near Leonard Co.  
 80.56 Enter at the East Boundary 10 links North of the post,  
 corner of sec. 25 & 36. Same as the same.

West On the line between Sec. 25 & 36. T 8. N. R. 1 W.  
 40.03 Set the timber 7/8 support at the corner in the river.



from which, Beak 12 in dir. line. A 59 E. 12 the dist  
 endow 10.5 " " " A 4 E. 12 " "  
 80.06 To the cor of sur 25, 26, 35 & 36.

North Between Sur 25 & 26. T. S. A. R. 17.  
 40.00 Set a post from which,  
 Beak 15 in dir. line. A 56 N. 13 links dist, to,  
 Sassafras " " " A 18 E. 26 " "  
 55.00 To a Beak 12 links mid, corner E.  
 80.00 Set a post for the cor of sur 23, 24, 25 & 26. From which,  
 A 10 in dir. line. A 80 E. 16 links dist, to,  
 Beak 5 " " " A 31 E. 11 " "  
 Same the same.

East On a Random line between Sur 24 & 25 T. S. A. R. 17.  
 40.00 Set a temp? to support.  
 65.50 To a Beak 15 links mid, corner S. W.  
 80.16 Enter cut the East Boundary 26 links North of the  
 post cor of sur 24 & 25. Same hilly, thin soil. Timber  
 Oak & Hick.

West On the true line between Sur 24 & 25 T. S. A. R. 17.  
 40.08 Set the temp? to support. at the av. dist. on the true line  
 from which, Beak 6 in dir. line. A 53 E. 25 the dist.  
 endow W Oak 15 " " " A 3 E. 14 " "  
 80.16 To the post cor of sur 23, 24 & 25 & 26.

North Between Sur 23 & 24 T. S. A. R. 17.  
 40.00 Set a post from which,  
 Sugar 12 in dir. line. A 5 E. 22 links dist, to,  
 Do. 5 " " " A 19 N. 22 " "  
 40.50 To a Spring - the mid, corner S. E.  
 48.00 " " Do. - " " " S. E.

54.00 To a Spring - links mid, corner S. E.  
 80.00 Set a post for the cor of sur 13, 14, 23 & 24 from which,  
 Beak 8 in dir. line. A 69 E. 15 links dist, to,  
 W Oak 10 " " " A 9 N. 22 " "  
 Same rolling under rich Timber Beak, Sugar, Poplar,  
 Oak & Ash.

East On a Random line between Sur 13 & 24 T. S. A. R. 17.  
 32.00 To a Beak 12 links mid, corner S. E.  
 40.00 Set a temp? to support.  
 80.00 Enter cut the East Boundary at the cor of sur 13 & 24.  
 Same the same.

West On the true line between Sur 13 & 24 T. S. A. R. 17.  
 40.00 Set a post for the cor. of 1/4 Sec. at the av. dist. on the  
 true line from which a 9 in. Oak  
 W Oak 20 in diam. bears S. 25. E. 30 links dist. to  
 " Do. 8 " " " A 15 E. 16 " "  
 80.00 To the post cor of Sec. 13, 14, 23 & 24.

North Between Sur 13 & 14 T. S. A. R. 17.  
 40.00 Set a post from which,  
 Beak 8 in dir. line. A 70 E. 24 links dist, to  
 Do. 10 " " " A 5 N. 22 " "  
 80.00 Set a post for the cor of sur 11, 12, 13 & 14 from which,  
 Beak 18 in dir. line. A 23 N. 19 links dist, to,  
 W Oak 15 " " " A 50 E. 18 " "  
 Same the same.

East On a Random line between Sur 12 & 13 T. S. A. R. 17.  
 40.00 Set a temp? to support.  
 79.57 Enter cut the East Boundary 40 links South of the post  
 cor of sur 12 & 13. Same the same.



## T. N. 8. N. R. No 177 D. and M. Ind.

West On the line between Sur 12 & 13 T. 8. N. R. 177.  
 39.78 Set the timber for support at the ar. dish on the line from  
 from white, Buck 13 in deer beam. 156 E 8 the dish,  
 and a No. 12 " " 165 N. 22 " "  
 79.81 To the post on of sur 11, 12, 13 & 14

North Return Sur 11 & 12 T. 8. N. R. 177.  
 38.00 To support corner S.W.  
 40.00 Set a support from white,  
 Buck 20 in deer beam. 152 N. 24 limbs dish; 10,  
 Sugar. 10 " " " 154 N. 26 " "  
 80.00 Set a post for the corner of sur 1, 2, 11, & 12 from white,  
 Buck 4 in deer beam. 135 E 4 limbs dish; 10,  
 No. 5 " " " 135 N. 11 " "  
 Same as the same.

East On a R. on line between Sur 1 & 12 T. 8. N. R. 177.  
 40.00 Set a timber for support.  
 78.70 Intersect the East Boundary 44 limbs South of the  
 post on of sur 1 & 12. Same as the same.

West On the line between Sur 1 & 12 T. 8. N. R. 177.  
 39.35 Set the timber for support at the ar. dish on the line from  
 from white, Buck 5 in deer beam. 176 E 7 the dish,  
 and a No. 6 " " " 176 N. 20 " "  
 78.70 To the post on of sur 1, 2, 11 & 12.

North Return Sur 1 & 12 T. 8. N. R. 177.  
 40.00 Set a support from white,  
 Sugar. 10 in deer beam. 140 E 15 limbs dish; 10,  
 Buck. 12 " " " 131 N. 5 " "  
 77.34 Set out the N. Boundary 170 limbs East of the post on  
 of Sur 35 & 36. T. 9. N. R. 177 and set a post for the cor.

## T. N. 8. N. R. No 177 D. and M. Ind.

of Sur 1 & 12 from white,  
 Sugar. 25 in deer beam. 136 N. 13 limbs dish; 10,  
 Buck. 11 " " " 145 N. 5 " "  
 Same as the same.

North Return Sur 34 & 35 T. 8. N. R. 177.  
 17.00 To a R. on 12 limbs dish, corner S.  
 40.00 Set a support from white,  
 Buck 8 in deer beam. 113 E 13 the dish; 10,  
 No. 18 " " " 123 N. 30 " "  
 80.00 Set a post for the corner of sur 26, 27, 34 & 35 from white,  
 Ash. 6 in deer beam. East. 15 limbs dish; 10,  
 No. 8 " " " 159 E 19 " " Same as the same.

East On a R. on line between Sur 26 & 35 T. 8. N. R. 177.  
 1.00 To a R. on 10 limbs dish, corner S.W.  
 40.00 Set a timber for support.  
 79.80 Set out the N. 18 line 10 limbs South of the post on of  
 Sur 25, 26, 33 & 36. Same as the same.

West On the line between Sur 26 & 35 T. 8. N. R. 177.  
 39.90 Set the timber for support at the ar. dish on the line from  
 from white, Sugar. 10 in deer beam. 168 N 17 limbs dish; 10,  
 Buck. 12 " " " 137 E 10 " "  
 79.80 To the corner of sur 26, 27, 34 & 35.

North Return Sur 26 & 27 T. 8. N. R. 177.  
 40.00 Set a support from white,  
 Sugar. 10 in deer beam. 140 E 20 limbs dish; 10,  
 Buck. 12 " " " 131 N. 5 " "  
 80.00 Set a post for the corner of sur 22, 23, 26 & 27 from white,  
 Hickory 18 in deer beam. 135 E 15 limbs dish; 10,  
 Logwood 5 " " " 189 N. 4 " "



Sando the same.

East Oak Random line between Sec 23 & 26 T. 8 N. R. 1 W.  
 40.00 Set a trap for the post.  
 79.75 Intersect the N. 13 line. 47 links South of the post on  
 of sec. 23, 24, 25 & 26. Sando the same.

West Oak line between Sec 23 & 26 T. 8 N. R. 1 W.  
 39.875 Set the trap for the post at the ar. dist. on the true line  
 from which Sugar 8 in air beam. 227 N. 24 the dist.  
 and do. 10. 10 " " " 227 N. 20 " "  
 79.75 To the post on of sec. 22, 23, 26 & 27.

North Between Sec 22 & 23 T. 8 N. R. 1 W.  
 40.00 Set a trap for the post from which,  
 Brook 10 in air beam. 237 E. 6 links dist. 20,  
 Wash. 18 " " " 227 N. 15 " "  
 80.00 Set a post for the c. g. sec. 14, 15, 22 & 23 from which,  
 Brook 6 in air beam. 282 E. 10 the dist. 20,  
 Sugar. 18 " " " 211 N. 30 " "  
 Sando the same.

East Oak Random line between Sec 14 & 23 T. 8 N. R. 1 W.  
 40.00 Set a trap for the post.  
 79.80 Intersect the N. 13 line. 12 links North of the post on of  
 Sec 13, 14, 23 & 24. Sando the same.

West Oak line between Sec 14 & 23 T. 8 N. R. 1 W.  
 39.90 Set the trap for the post at the ar. dist. on the true line  
 from which, Brook 6 in air beam. 287 E. 7 the dist.  
 and do. Gum. 20 " " " 287 N. 24 " "  
 79.80 To the post on of sec. 14, 15, 22 & 23.

North Between Sec 14 & 23 T. 8 N. R. 1 W.  
 40.00 To a Brook 8 links mid. corner N.  
 36.50 " " 10 " " " " " "  
 40.00 Set a trap for the post from which,  
 Sugar. 8 in air beam. 234 E. 16 links dist. 20,  
 10. 10 " " " 246 N. 6 " "  
 80.00 Set a post for the c. g. sec. 10, 11, 14 & 15 from which,  
 Sugar. 8 in air beam. 284 N. 11 links dist. 20,  
 Dogwood 6 " " " 261 E. 15 " "  
 Sando the same.

East Oak Random line between Sec 11 & 14 T. 8 N. R. 1 W.  
 33.50 To a Brook 10 links mid. corner. T. W.  
 40.00 Set a trap for the post.  
 79.80 Intersect the N. 13 line. 58 links North of the post on of  
 Sec 11, 12, 13 & 14. Sando the same.

West Oak line between Sec 11 & 14 T. 8 N. R. 1 W.  
 39.90 Set the trap for the post at the ar. dist. on the true line from which  
 a Brook 10 in air beam. 264 E. 20 the dist. 20,  
 10. 8 " " " 242 N. 22 " "  
 79.80 To the post on of sec. 10, 11, 14 & 15.

North Between Sec 10 & 11 T. 8 N. R. 1 W.  
 33.00 To a Brook 18 the mid. corner N.  
 40.00 Set a trap for the post from which,  
 Sugar. 8 in air beam. 250 E. 21 links dist. 20,  
 Immord 5 " " " 230 E. 5 " "  
 42.00 To a Brook 20 links mid. corner S. E.  
 51.00 To the same " " " " from the N.  
 58.00 Same from the East.  
 62.00 To a Brook 10 links mid. corner N.  
 80.00 Set a post for the c. g. sec. 2, 3, 10 & 11 from which,



L. N.º 8. A. R. N.º 1779<sup>da</sup> Min Ind<sup>a</sup>.

Reck. 6 in dist. hurs. M. E. 11 hurs. dist. 10  
Do. 6 4 " " A. G. 17. 14 " "  
Stands the same.

East On a Kandamm line between Sec. 2<sup>d</sup> & 11<sup>th</sup>. S.W. 1<sup>st</sup>.  
 300 To a Brook 18 mds wide. Corner S.W.  
 1200 " Loc. 10 " " " S.W.  
 4000 Let. a tramp 7/4 suspect.  
 80. 12. Intersect the N.E. line. 26 mds South of the first.  
 cor of sec. 1, 2, 11 & 12. Same the same.

Most On the line min between Jul 24<sup>th</sup> 18<sup>th</sup> M. 1<sup>st</sup> W.  
40.06 Set the temp. 7 ft apart. at the arch in the line min  
from which, 92<sup>nd</sup> 12 in clear time. At 45 M. 6 lbs dist  
under 20. 10 " " " 19 M. 13 " "  
80. 12 To the post on of ear 2. 3 10 M.

North  
40.00 Return Sat 21<sup>st</sup> J. S. M. R. 177.  
Set a<sup>th</sup> 2 a post from which,  
Peak 18 in dist. here. N 87<sup>th</sup> 9 links dist; to,  
Do. 8 " " " N 29 E. 15 " "  
p. 80. Take out the A. Round. 7 38 9 links East of the post cu.  
of sec. 34 135 J. S. M. R. 177. and set a post for the cu.  
" " 21<sup>st</sup> from which,  
Sugar 12 in dist. here. N 60 E. 1<sup>st</sup> of the dist; to,  
Do. 10 " " " N 80 W. 24 " "  
Sound the same.

North	Between Sw. 33 & 34 T. 8 N. R. 1 W.
40.00	Set a 74 cup post from which, Kicky 12 mi. dist. from S. 34 N. 22 (mb, dist, Va, Poplar. 4 " " " ASO 79 " "
80.00	Set a post for the end of sw. 27, 28 33 & 34 from which,

S. A. S. R. A. N. D. M. L.

9 Beach, 8 mi. dist. from. N 81 E. 26 miles dist; Pa.  
Loc. 8 & 9 " N 70 N. 14 " "  
Sand rich and rolling Timber Walnut, Sugar, & Beech,  
(Oak & Hick.)

East	Quak Randm line between Jcs 27 134 78.04.17.
40,00	Get a timber to support.
80,00	Introduce the AHS line at the post on level 2627.34135.
	See of the same, &c.

West On the line between Dec 27 1834 & 1835.  
 40,000 Set a temporary support for the India on at the ar. dist on  
 the line from which,  
 Beach, 29 in water line. 18 9. 28 the dist; 18  
 Sugar. 8 + + + 18 24 + +  
 80,000 To the port on of Dec 27, 33 & 34.

North	Between Jul 27 1782 & 8 M. 177.
26.00	To spring house W.
40.00	Set a 70 cup post from which Sugar. 5 in deer house Apr 17. 18 lbs dist; 80 Buck. 4 " " " 136 E. 22 " "
80.00	Set a post for the cages. 26. 27, 27. 178. from which, Buck. 5 in deer house 136 W. 6 lbs. dist; 80. 20. 10 " " " 27 E. 26 " "
	Sum do the same.

East	Ona Kanam line between Sur 22 13% S. 8. 14. 17
40.00	Set a trap? In support.
8.1. 13	Flaget. At low 10 links South of S. 14. 13. 14. 15. 16. 17. 18. 19. 20. 21. 22. 23. 24. 25. 26. 27. 28. 29. 30. 31. 32. 33. 34. 35. 36. 37. 38. 39. 40. 41. 42. 43. 44. 45. 46. 47. 48. 49. 50. 51. 52. 53. 54. 55. 56. 57. 58. 59. 60. 61. 62. 63. 64. 65. 66. 67. 68. 69. 70. 71. 72. 73. 74. 75. 76. 77. 78. 79. 80. 81. 82. 83. 84. 85. 86. 87. 88. 89. 90. 91. 92. 93. 94. 95. 96. 97. 98. 99. 100. 101. 102. 103. 104. 105. 106. 107. 108. 109. 110. 111. 112. 113. 114. 115. 116. 117. 118. 119. 120. 121. 122. 123. 124. 125. 126. 127. 128. 129. 130. 131. 132. 133. 134. 135. 136. 137. 138. 139. 140. 141. 142. 143. 144. 145. 146. 147. 148. 149. 150. 151. 152. 153. 154. 155. 156. 157. 158. 159. 160. 161. 162. 163. 164. 165. 166. 167. 168. 169. 170. 171. 172. 173. 174. 175. 176. 177. 178. 179. 180. 181. 182. 183. 184. 185. 186. 187. 188. 189. 190. 191. 192. 193. 194. 195. 196. 197. 198. 199. 200. 201. 202. 203. 204. 205. 206. 207. 208. 209. 210. 211. 212. 213. 214. 215. 216. 217. 218. 219. 220. 221. 222. 223. 224. 225. 226. 227. 228. 229. 230. 231. 232. 233. 234. 235. 236. 237. 238. 239. 240. 241. 242. 243. 244. 245. 246. 247. 248. 249. 250. 251. 252. 253. 254. 255. 256. 257. 258. 259. 260. 261. 262. 263. 264. 265. 266. 267. 268. 269. 270. 271. 272. 273. 274. 275. 276. 277. 278. 279. 280. 281. 282. 283. 284. 285. 286. 287. 288. 289. 290. 291. 292. 293. 294. 295. 296. 297. 298. 299. 300. 301. 302. 303. 304. 305. 306. 307. 308. 309. 310. 311. 312. 313. 314. 315. 316. 317. 318. 319. 320. 321. 322. 323. 324. 325. 326. 327. 328. 329. 330. 331. 332. 333. 334. 335. 336. 337. 338. 339. 340. 341. 342. 343. 344. 345. 346. 347. 348. 349. 350. 351. 352. 353. 354. 355. 356. 357. 358. 359. 360. 361. 362. 363. 364. 365. 366. 367. 368. 369. 370. 371. 372. 373. 374. 375. 376. 377. 378. 379. 380. 381. 382. 383. 384. 385. 386. 387. 388. 389. 390. 391. 392. 393. 394. 395. 396. 397. 398. 399. 400. 401. 402. 403. 404. 405. 406. 407. 408. 409. 410. 411. 412. 413. 414. 415. 416. 417. 418. 419. 420. 421. 422. 423. 424. 425. 426. 427. 428. 429. 430. 431. 432. 433. 434. 435. 436. 437. 438. 439. 440. 441. 442. 443. 444. 445. 446. 447. 448. 449. 450. 451. 452. 453. 454. 455. 456. 457. 458. 459. 460. 461. 462. 463. 464. 465. 466. 467. 468. 469. 470. 471. 472. 473. 474. 475. 476. 477. 478. 479. 480. 481. 482. 483. 484. 485. 486. 487. 488. 489. 490. 491. 492. 493. 494. 495. 496. 497. 498. 499. 500. 501. 502. 503. 504. 505. 506. 507. 508. 509. 510. 511. 512. 513. 514. 515. 516. 517. 518. 519. 520. 521. 522. 523. 524. 525. 526. 527. 528. 529. 530. 531. 532. 533. 534. 535. 536. 537. 538. 539. 540. 541. 542. 543. 544. 545. 546. 547. 548. 549. 550. 551. 552. 553. 554. 555. 556. 557. 558. 559. 560. 561. 562. 563. 564. 565. 566. 567. 568. 569. 570. 571. 572. 573. 574. 575. 576. 577. 578. 579. 580. 581. 582. 583. 584. 585. 586. 587. 588. 589. 590. 591. 592. 593. 594. 595. 596. 597. 598. 599. 600. 601. 602. 603. 604. 605. 606. 607. 608. 609. 610. 611. 612. 613. 614. 615. 616. 617. 618. 619. 620. 621. 622. 623. 624. 625. 626. 627. 628. 629. 630. 631. 632. 633. 634. 635. 636. 637. 638. 639. 640. 641. 642. 643. 644. 645. 646. 647. 648. 649. 650. 651. 652. 653. 654. 655. 656. 657. 658. 659. 660. 661. 662. 663. 664. 665. 666. 667. 668. 669. 670. 671. 672. 673. 674. 675. 676. 677. 678. 679. 680. 681. 682. 683. 684. 685. 686. 687. 688. 689. 690. 691. 692. 693. 694. 695. 696. 697. 698. 699. 700. 701. 702. 703. 704. 705. 706. 707. 708. 709. 710. 711. 712. 713. 714. 715. 716. 717. 718. 719. 720. 721. 722. 723. 724. 725. 726. 727. 728. 729. 730. 731. 732. 733. 734. 735. 736. 737. 738. 739. 740. 741. 742. 743. 744. 745. 746. 747. 748. 749. 750. 751. 752. 753. 754. 755. 756. 757. 758. 759. 760. 761. 762. 763. 764. 765. 766. 767. 768. 769. 770. 771. 772. 773. 774. 775. 776. 777. 778. 779. 780. 781. 782. 783. 784. 785. 786. 787. 788. 789. 790. 791. 792. 793. 794. 795. 796. 797. 798. 799. 800. 801. 802. 803. 804. 805. 806. 807. 808. 809. 810. 811. 812. 813. 814. 815. 816. 817. 818. 819. 820. 821. 822. 823. 824. 825

West Cut the true line between Sec. 22 & 27. T. 5. N. R. 17. E.  
40.06 Set the temp. of the soil at the av. dist. on the true line from



whisk, 7 Oak 30 in diam here. N 35 E. 6 limbs each  
 Sugar Ash 16 " " " N 20 E. 30 " "  
 80.12 To the post on of ear. 21. 22, 23 & 28

North Return Jul 21 1892 T. 8. N. R. 177.

30.00 To a Brook 15 limbs mid, Come S. W.

40.00 Set a 7th support from which,  
 Sugar 12 in diam here. N 20 W. 13 limbs each, 20,  
 Buckeye 10 " " N 5 W. 25 " "

61.00 To a Brook 6 limbs mid, Come E.

80.00 Set a post for the cor of ear. 15. 16. 21 & 22 from which,  
 Buck 20 in diam here. N 15 E. 5 limbs each, 20,  
 Ho. 20 " " " S 81 E. 30 " "  
 Sando a little rolling stick, Limbu poplar, ash &  
 Gum. &c.

East On a Kanam line between Jul 15 & 22 T. 8. N. R. 177.

7.00 To a Brook 6 limbs mid, Come S.

16.00 " " " " " " " " " "

40.00 Set a support for support.

80.00 Intersut the 2nd & 3rd line 10 limbs South of the post on  
 of ear. 14. 15. 20 & 23. Sando a little rolling stick.

West On the true line between Jul 15 & 22 T. 8. N. R. 177.

40.00 Set the support for ear post at the ar. dist on the true line  
 from which Sugar 9 in diam here. S 16 W. 10 limbs each

and a Ho. 8 " " " N 15 E. 7 " "  
 80.00 To the post on of ear. 15. 16. 21 & 22.

North Return Jul 15 & 16 T. 8. N. R. 177.

40.00 Set a 7th support from which,  
 Buck 16 in diam here. S 27 W. 19 limbs each, 20,  
 Ho. 10 " " " N 60 E. 30 " "

63.00 To a Brook 12 in diam on the true line.

80.00 Set a post for the cor of ear. 9. 10. 15 & 16 from which,  
 Buck 8 in diam here. N 60 W. 15 limbs each, 20,  
 Ho. 18 " " " N 57 E. 17 " "  
 Sando the same.

East On a Kanam line between Jul 10 & 15 T. 8. N. R. 177.

35.00 To a Brook 7 limbs mid, Come S. E.

40.00 Set a support for support.

41.50 To a Brook 10 limbs mid, Come S.

79.76 Intersut the N. B. line 11 limbs North of the post on of  
 Jul 10. 11. 14 & 15. Sando the same.

West On the true line between Jul 10 & 15 T. 8. N. R. 177.

39.88 Set the support for ear post at the ar. dist on the true line.  
 from which, Buckeye 10 in diam here. S 17 W. 15 limbs each  
 and a Sugar 4 " " " N 31 E. 15 " "

79.76 To the post on of ear. 9. 10. 15 & 16.

North Return Jul 9 & 10 T. 8. N. R. 177.

40.00 Set a 7th support from which,  
 Buck 8 in diam here. N 48 W. 15 limbs each, 20,  
 Sugar 8 " " " N 9 E. 15 " "

54.50 To a Brook 18 in diam on the true line.

80.00 Set a post cor of ear. 3. 24 & 27 from which,  
 Buck 8 in diam here. N 52 E. 7 limbs each, 20,  
 Ho. 5 " " " S 20 W. 21 " "  
 Sando a little rolling stick.

East On a Kanam line between Jul 3 & 10 T. 8. N. R. 177.

40.00 Set a support for support.

58.00 To a Brook 10 limbs mid, Come S.

79.66 Intersut the N. B. line 22 limbs North of the post on of



80.12	whisk, 7 Oak 30 in diam. bears. N 35 E. 6 links mid. Sugar 15 " " " " N 30 E. 30 " " To the post on of sur. 21, 22, 23, 24
North	Return Sur 21 22 23 J. S. N. R. 177.
30.00	To a Brook 15 links mid, comes S. W.
40.00	Set a 7 <sup>th</sup> support from which, Sugar 12 in diam. bears. N 62 W. 13 links dist, S. W., Buckeye 10 " " " " N 57 W. 25 " "
61.00	To a Brook 6 links mid, comes S.
80.00	Set apart for the cor of sur. 15, 16, 21 & 22 from which, Beck 20 in diam. bears. N 15 E. 5 links dist, S. W., No. 20 " " " " S 81 E. 30 " " Saw a little rolling mill, some poplar, ash & Gum. &c.
East	On a Kanam line between Sur 15 & 22 J. S. N. R. 177.
7.00	To a Brook 6 links mid, comes S.
16.00	" " No. 30 " " " "
40.00	Set a 7 <sup>th</sup> support.
80.00	Intersect the N 15 line 10 links South of the post on of sur. 14, 15, 22 & 23. Saw a little mill. Same.
West	On the true line between Sur 15 & 22 J. S. N. R. 177.
40.00	Set the 7 <sup>th</sup> support at the ar. dist. on the true line from which Sugar 9 in diam. bears. S 16 W. 10 links dist, and a No. 8 " " " " N 15 E. 7 " "
80.00	To the post on of sur. 15, 16, 21 & 22.
North	Return Sur 15 & 22 J. S. N. R. 177.
40.00	Set a 7 <sup>th</sup> support from which, Beck 11 in diam. bears. S 27 W. 17 links dist, S. W., No. 10 " " " " N 60 E. 30 " "

63.00	To a Brook 12 in diam. on the true line.
80.00	Set apart for the cor of sur. 9, 10, 15 & 16 from which, Beck 8 in diam. bears. N 60 W. 15 links dist, S. W., No. 18 " " " " N 57 E. 17 " " Saw the same.
East	On a Kanam line between Sur 10 & 15 J. S. N. R. 177.
35.00	To a Brook 7 links mid, comes S. E.
40.00	Set a 7 <sup>th</sup> support.
41.50	To a Brook 10 links mid, comes S.
79.76	Intersect the N 15 line 11 links North of the post on of Sur 10, 11, 14 & 15. Saw the same.
West	On the true line between Sur 10 & 15 J. S. N. R. 177.
39.88	Set the 7 <sup>th</sup> support at the ar. dist. on the true line. from which, Buckeye 10 in diam. bears. S 17 W. 15 links dist, and a Sugar 4 " " " " N 31 E. 15 " "
79.76	To the post on of Sur 9, 10, 15 & 16.
North	Return Sur 9 & 10 J. S. N. R. 177.
40.00	Set a 7 <sup>th</sup> support from which, Beck 8 in diam. bears. S 48 W. 15 links dist, S. W., Sugar 8 " " " " N 9 E. 15 " "
54.50	To a Brook 18 in diam. on the true line.
80.00	Set apart cor of sur. 3, 4 & 9 from which, Beck 8 in diam. bears. N 52 E. 7 links dist, S. W., No. 5 " " " " S 20 W. 21 " " Saw a little mill the same.
East	On a Kanam line between Sur 3 & 9 J. S. N. R. 177.
45.00	Set a 7 <sup>th</sup> support.
58.00	To a Brook 10 links mid, comes S.
79.66	Intersect the N 15 line 22 links North of the post on of



of Sec 2, 3, 10 M. Land the same.

West  
39.83 On the line between Sec 3 & 10. T. S. R. N. 177.  
Set the temporary support at the ar. dist. on the line from which, Buck 4 in air beam. S 46 E. 30 the dist.  
and a Loc. 6 a a a N 18 W 32 a a  
49.66 To the post on Sec 3, 4, 9 & 10.

North  
40.00 Return Sec 3 & 10. T. S. R. N. 177.  
Set a temporary support from which,  
Poplar 6 in air beam. S 5 E. 7 limbs dist. 10,  
Buck 4 a a a S 77 E. 11 a a  
48.50 To a mark 30 in air in the line.  
44.50 Enter out the N. B. on a 43/4 limbs East of the post  
on of Sec 33 & 34. T. S. R. N. 177 and set a post for  
a a a 3 & 11 from which,  
Buck 30 in air beam. N 20 W 28 limbs dist. 10,  
Loc. 15 a a a N 30 E. 26 a a  
Land the same.

North  
17.50 Return Sec 32 & 33. T. S. R. N. 177.  
To a Spring Co. West.  
40.00 Spr. Elm. 12 in air. Stand for the cor of Sec 32 & 33.  
57.50 To a Spring Rock 6 limbs mid. corner N.  
80.00 Set a post for the cor of Sec 28, 29, 32 & 33 from which,  
Sugar 12 in air beam. S 88 E. 32 limbs dist. 10,  
Elm. 18 a a a S 55 W 14 a a  
Land the same.

East  
20.00 On a K. and M. line between Sec 28 & 33. T. S. R. N. 177.  
To a Rock 4 limbs mid. corner N.  
40.00 Set a temporary support.  
70.50 To a Rock 10 limbs mid. corner N.

80.00 Enter out the N. B. line. 28 limbs South of the post on of  
Sec 27, 28, 33 & 34. Land the same.

West  
40.00 On the line between Sec 28 & 33. T. S. R. N. 177.  
Set the temporary support at the ar. dist. on the line from which,  
Oak 8 in air beam. N 82 E. 22 the dist.  
and a Buck 8 a a a N 53 E. 12 a a  
80.00 To the post on Sec 28, 29, 32 & 33.

North  
4.50 Return Sec 28 & 29. T. S. R. N. 177.  
To a Rock 12 limbs mid. corner S. W.  
40.00 Set a temporary support from which,  
Buck 4 in air beam. N 10 W 3 limbs dist. 10  
Elm. 8 a a a N 39 E. 23 a a  
50.00 To a Rock 25 limbs mid. corner S. W.  
54.00 " " Loc. 35 a a a S 6 a a  
80.00 Set a post for the cor of Sec 20, 21, 28 & 29 from which,  
B. Walnut. 15 in air beam. S 9 E. 6 the dist. 10,  
Sugar. 9 a a a N 50 W 11 a a  
Land the same.

East  
40.00 On a K. and M. line between Sec 21 & 28. T. S. R. N. 177.  
Set a temporary support.  
49.50 To a Rock 25 limbs mid. corner S. W.  
74.50 " " Loc. 10 a a a S. W.  
79.90 Enter out the N. B. line 10 limbs South of the post on of  
Sec 21, 22, 27 & 28. Land the same.

West  
39.95 Return Sec 21 & 28. T. S. R. N. 177. Line line  
Set the temporary support at the ar. dist. on the line from which,  
Oak 30 in air beam. N 20 E. 10 the dist.  
and a Buck 35 a a a S 4 E. 25 a a  
79.90 To the cor of Sec 20, 21, 28 & 29.















T. No 8. N.R. No 1 W. and M. Ind.

West  
39.31 Outh Line line between Dec 20 1879. T. 8 N.R. 2 W.  
Set the timber post on the line line for the end of 1/4 sec  
from which, 15 in dist. 167 E. 10 lbs dist.  
made a Sugar 5 " " No 3 W. 22 " "  
78.62 To the post on of 1st 19.20.27 130.

West  
40.00 Return Dec 19 130 T. 8 N.R. 1 W.  
Set a 1/4 sap post from which,  
Beck 15 in dist. line East 12 lbs dist. to  
N Oak 18 " " " 148 W. 10 " "  
117.50 To a River 10 lbs mid, corner D.  
84.00 Enter at the West Boundary 42 lbs South of the  
post on of 1st 24 135. T. 8. N.R. 2 W. and set a  
post " " " 19130 from which,  
Sugar 10 in dist. line. N 32 W 3 lbs dist. to,  
No 8 " " " 17 W. 20 " "  
Sound the same.

North  
40.00 Return Dec 19 120 T. 8. N.R. 1 W.  
Set a 1/4 sap post from which,  
Sugar 10 in dist. line. N 45 W. 8 lbs dist. to,  
No. 15 " " " 144 E. 28 " "  
80.00 Set a post for the end of 1st 18.19 120 from which,  
Beck 12 in dist. line. N 9 W. 46 lbs dist. to,  
No. 8 " " " 143 E. 25 " "  
Sound the same.

East  
100 On a Random line between Dec 17 120 T. 8 N.R. 1 W.  
To a River 12 lbs mid, corner D.  
40.00 Set a timber 1/4 sap post.  
72.00 To a River 20 lbs mid, corner D.W.  
78.40 Enter at the N 13 line 12 lbs North of the post  
on of 1st 16.17 20 17. Sound the same.

T. No 8. N.R. No 1 W. and M. Ind.

West  
39.20 Outh Line line between Dec 17 120 T. 8 N.R. 1 W.  
Set the timber 1/4 sap post at the end on the line line  
from which, Beck 30 in dist. line. N 47 E. 18 lbs dist.  
made a Sugar " " " N 39 W. 19 " "  
78.40 To the end of 1st 18.19 120.

West  
40.00 Return Dec 18 119 T. 8. N.R. 1 W.  
Set a 1/4 sap post from which,  
Beck 15 in dist. line. N 54 W. 11 lbs dist. to,  
No. 8 " " " 144 E. 18 " "  
83.40 Enter at the West Boundary at the post on of 1st 13 124  
T. 8 N.R. 2 W. Sound the same.

North  
10.00 Return Dec 17 118 T. 8 N.R. 1 W.  
To a River 12 lbs mid, corner D.W.  
40.00 Set a 1/4 sap post from which,  
Sugar 15 in dist. line. N 57 E. 11 lbs dist. to,  
Beck 8 " " " 183 W. 29 " "  
80.00 Set a post for the end of 1st 18.17 118. from which,  
Sugar 8 in dist. line. N 49 W. 4 lbs dist. to,  
No. 4 " " " 147 E. 18 " "  
Sound the same.

East  
40.00 On a Random line between Dec 8 117 T. 8 N.R. 1 W.  
Set a timber 1/4 sap post.  
79.30 Enter at the N 13 line 36 lbs South of the post on  
of 1st 8.9.16 117. Sound the same.

West  
39.65 Outh Line line between Dec 8 117 T. 8 N.R. 2 W.  
Set the timber 1/4 sap post at the end on the line line  
from which, Sugar 8 in dist. line. N 56 W. 14 lbs dist.  
made a No 5 " " " N 84 E. 18 " "  
79.30 To the post on of 1st 7.8.17 118.



West Between Sec. 7 & 18 T. 8. S. R. 1 W.  
 30.00 To a Brook 15 links mid., corner S.  
 40.00 Set a post from whitch,  
 Sugar 10 in deer beam. S. E. 16 links dist. to,  
 Hick 10 " " " N. 34 W. 35 " "  
 70.00 To a W. Oak 15 in deer in the line.  
 81.71 Intersect the West Boundary 196 links South of  
 the post cor of sec. 12 & 13 T. 8. S. R. 2 W. and  
 set a post from the cor of sec. 7 & 18 from whitch,  
 Sugar 15 in deer beam. S. E. 6 links dist. to,  
 Hogwood 2 " " " N. 11 W. 5 " "  
 Land the same.

North Between Sec. 7 & 18 T. 8. S. R. 1 W.  
 40.00 Set a post from whitch,  
 W. Oak 18 in deer beam. N. 19 W. 16 links dist. to,  
 W. Oak 14 " " " N. 12 W. 11 " "  
 44.50 To a Brook 20 links mid., corner E.  
 80.00 Set a post from the cor of sec. 5, 6, 7 & 8 from whitch,  
 Sugar 12 in deer beam. N. 68 W. 25 links dist. to,  
 Ho. 8 " " " S. 70 E. 10 " "  
 Land the same.

East On a Pandum line between Sec. 5 & 8 T. 8. S. R. 2 W.  
 40.00 Set a post from whitch,  
 79.71 Intersect the N. T. S. line 65 links North of the post  
 cor of Sec. 4, 5, 8 & 9 Land the same.

West On the same line between Sec. 5 & 8 T. 8. S. R. 1 W.  
 39.85 Set the temporary support at the ar dist. in the line  
 from whitch, Sugar 15 in deer beam N. 24 W. 17 links dist.  
 and a N. Walnut 30 " " " S. 7 E. 46 " "  
 79.71 To the post cor of sec. 5, 6, 7 & 8.  
 Land the same.

West Between Sec. 6 & 7 T. 8. S. R. 1 W.  
 40.00 Set a post from whitch,  
 Sugar 8 in deer beam. S. 12 E. 21 links dist. to,  
 Hick 18 " " " N. 61 W. 40 " "  
 64.00 To a Brook 10 links mid., corner S. E.  
 81.70 Intersect the West Boundary 26 links North of the  
 post cor of sec. 1 & 2 T. 8. S. R. 2 W. and set a post from  
 the " " " 61.7 from whitch,  
 Hick 10 in deer beam. S. 9 W. 17 links dist. to,  
 Hogwood 3 " " " N. 35 E. 13 " "  
 Land the same.

North Between Sec. 5 & 6 T. 8. S. R. 2 W.  
 40.00 Set a post from whitch,  
 Sugar 5 in deer beam. S. 5 W. 15 links dist. to,  
 Ho. 12 " " " N. 68 W. 13 " "  
 73.56 Intersect the N. T. S. Boundary 280 links East of the  
 post cor of sec. 31 & 32 T. 9. S. R. 1 W. and set a post  
 " " " 51.6 from whitch,  
 Sugar 12 in deer beam. S. 85 W. 10 links dist. to,  
 Hick 5 " " " N. 72 E. 13 " "  
 Land the same.

Surveyed by  
 Arthur Henric.  
 Dep. J. Sur.

Compd

I certify that the foregoing Transcript of the field  
 notes of Township N. 8. S. R. No 1 W. Quad. Min. Ind.  
 has been compared with the original notes of the  
 Office and found to be correct.  
 Surveyor General's Office  
 Cincinnati Oct 20 1841

Sur. Genl.